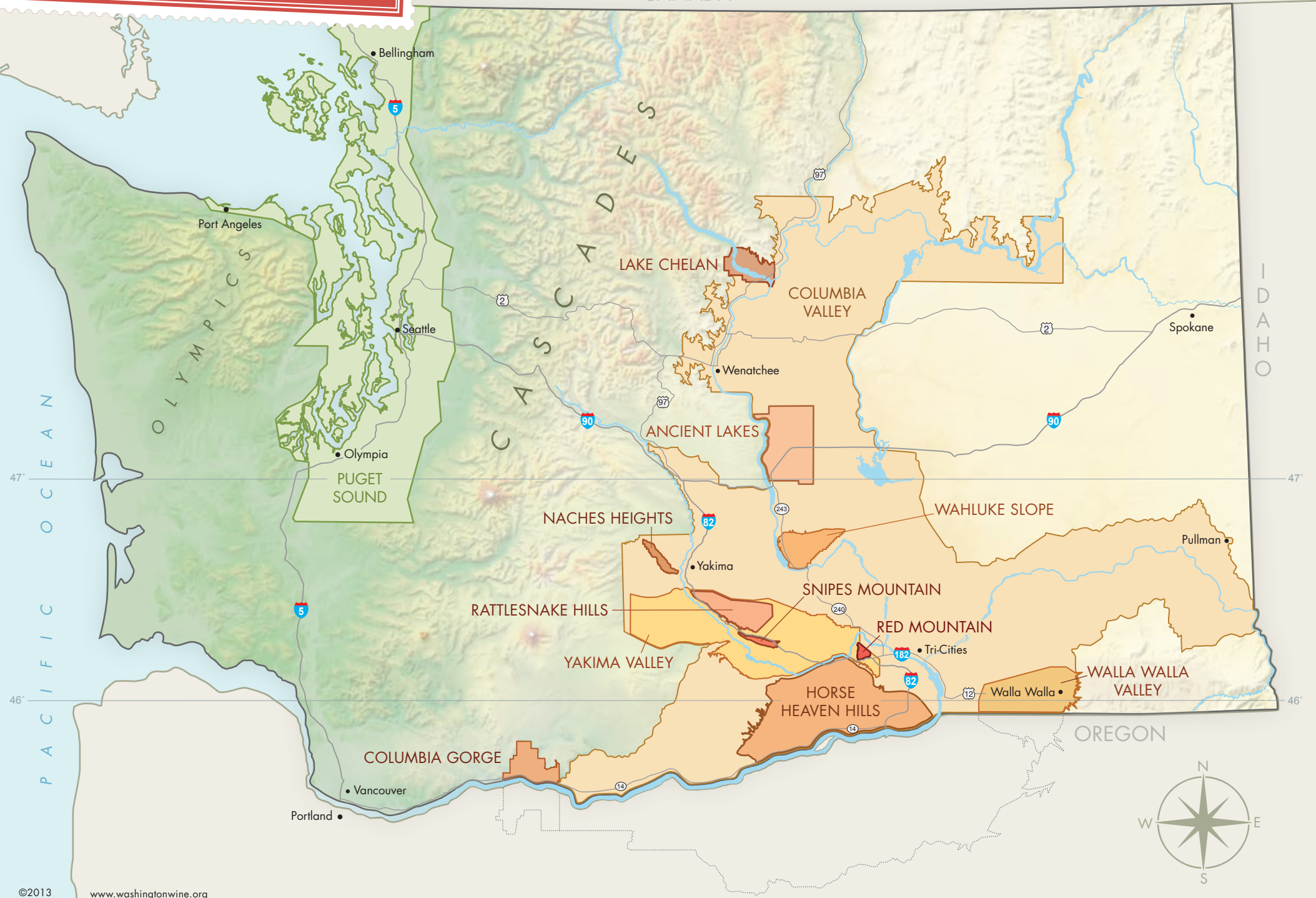




WASHINGTON STATE AMERICAN VITICULTURAL AREAS

CANADA



AVA FAST FACTS

Yakima Valley, Est. 1983

13,452 Acres, 40% Red, 60% White

Walla Walla Valley, Est. 1984

1,304 Acres, 82% Red, 18% White

Columbia Valley, Est. 1984

6,070 Acres, 58% Red, 42% White
(43,317 acres including sub-AVAs)

Puget Sound, Est. 1995

178 Acres, 61% Red, 39% White

Red Mountain, Est. 2001

1,273 Acres, 93% Red, 7% White

Columbia Gorge, Est. 2004

394 Acres, 36% Red, 64% White

Horse Heaven Hills, Est. 2005

10,584 Acres, 66% Red, 34% White

Wahluke Slope, Est. 2006

6,645 Acres, 67% Red, 33% White

Rattlesnake Hills, Est. 2006

1,599 Acres, 56% Red, 44% White

Snipes Mountain, Est. 2009

704 Acres, 54% Red, 46% White

Lake Chelan, Est. 2009

247 Acres, 51% Red, 49% White

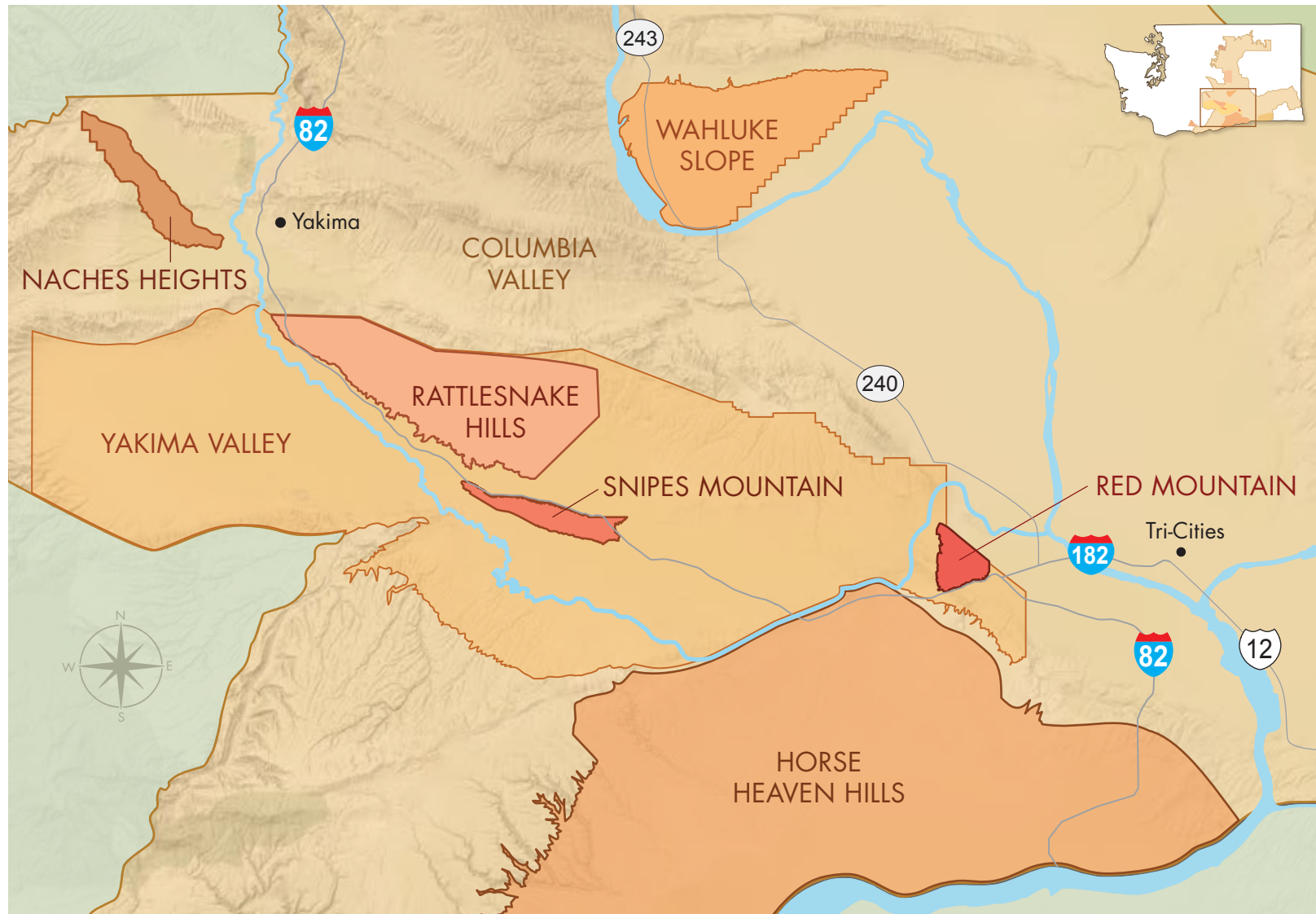
Naches Heights, Est. 2011

40 Acres, 40% Red, 60% White

Ancient Lakes, Est. 2012

1,399 Acres, 20% Red, 80% White

Total Wine Grape Acres: 43,889



RAIN SHADOW EFFECT

The Columbia Valley is protected from wet weather systems by two major mountain ranges, the Olympics and the Cascades, creating the perfect climate for wine in the warm and dry eastern part of the state.

